



# webb ellis

The Rugby Store

Official Kit Supplier to  
Old Laurentian RFC

10% DISCOUNT off:  
Boots, Shorts, Headguards,  
Gloves, Training Shirts, Balls,  
Replica Shirts ...  
on production of this programme

The largest selection of rugby gear at the best prices

01788 567777

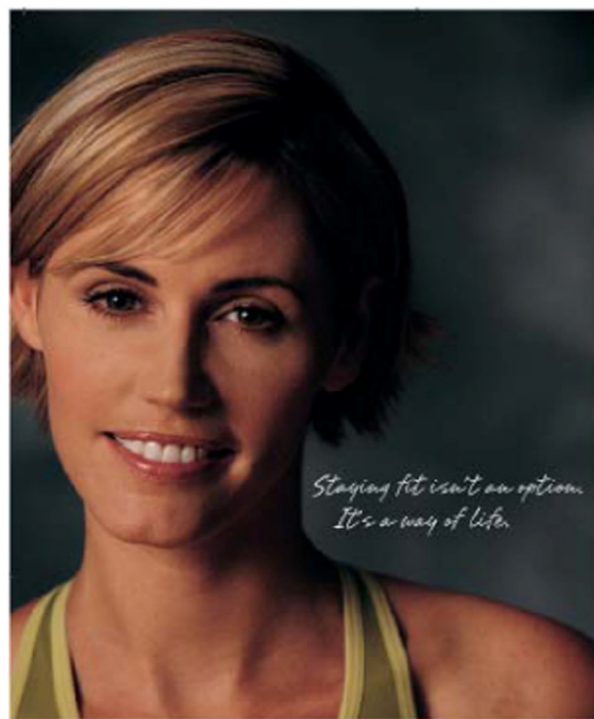
[www.webb-ellis.co.uk](http://www.webb-ellis.co.uk)



**webb ellis**



## Life Fitness



*Staying fit isn't an option.  
It's a way of life.*



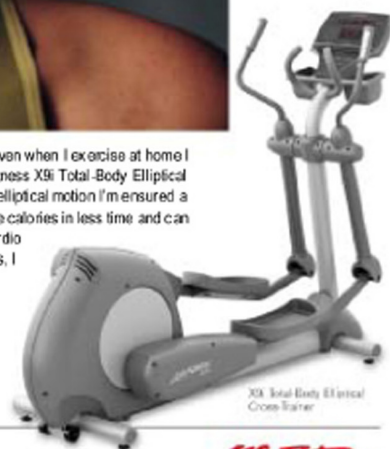
The Treadmill



23 Weight Lifter™  
Exercise Bike



23 Cycle Motion™  
Spin System



X9i Total Body Elliptical  
Cross-Trainer

I dream big, I aim high. And I don't make excuses. Even when I exercise at home I insist on a health-club quality workout, and the Life Fitness X9i Total-Body Elliptical Cross-Trainer delivers. With the purest, most natural elliptical motion I'm ensured a smooth ride so I can train more effectively, I burn more calories in less time and can access up to 25 workouts to maintain variety in my cardio routine. With the X9i I don't just meet my fitness goals, I exceed them.

Where does your workout take you?

[www.lifefitness.com](http://www.lifefitness.com)

**Life Fitness**

01353 666017

Proud to be associated with  
Old Laurentian RFC

# 1<sup>st</sup> XV Fixtures & Results

Date		Opponents	Venue	Type	Result	
Month	Day				+	-
September	6	Lutterworth	A	F	34	22
September	13	Droitwich	H	L	32	12
September	20	Kidderminster	A	L	31	14
September	27	Nuneaton Old Edwardians	H	L	49	17
October	4	Spartans	A	L	27	6
October	11	Newbold on Avon	H	L	18	13
October	18	Tamworth (EDF SV)	A	SV	37	14
October	25	Leamington	A	L	15	41
November	1	Old Coventrians	H	L	20	0
November	8	Barkers Butts	H	L	15	17
November	15	Silhillians	A	L	23	20
November	22	Lichfield (EDF SV)	H	SV	36	31
November	29	Earlsdon	H	L		
December	6	Berkswell & Balsall	A	L		
December	13	Leicester Forest	H	SV		
December	20	Silhillians	H	L		
December	26	<i>Inter Club Game</i>				
January	3	Old Coventrians	A	W		
January	10	Barkers Butts	A	L		
January	17	<i>EDF Senior Vase</i>		SV		
January	24	Old Coventrians	A	L		
January	31	Leamington	H	L		
February	7	Market Bosworth	A	F		
February	14	Newbold on Avon	A	L		
February	21	Spartans	H	L		
February	28	<i>EDF Senior Vase QF</i>		SV		
March	7	Nuneaton Old Edwardians	A	L		
March	14	Kidderminster	H	L		
March	21	Metropolis RFC, USA	H	F		
March	28	Droitwich	A	L		
April	4	Berkswell & Balsall	H	L		
April	11	Market Bosworth	H	F		
April	18	Earlsdon	L	A		
April	25					

Fixture Key

Friendly = F, Midlands 3 West South = L, Warwickshire Cup = W, Senior Vase = SV

## Welcome to Fenley Field



As Chairman of the Old Laurentian R.F.C. and on behalf of our members it gives me great pleasure to welcome you here to Fenley Field, the home of O.L.R.F.C. since 1946. Founded in 1919, we are now in our 90<sup>th</sup> season and have remained faithful to the ethos of our founders, proud to say we are still an amateur club.

Today we play host to **Earlsdon RFC** and we are pleased to welcome their players, officials and supporters to Fenley Field. We hope you enjoy your visit.

We are also particularly delighted to welcome today's referee, **Chris Higgins**. Chris is from the Manchester Society on an exchange trip, so please make him feel at home in Warwickshire.

We are approaching the half way mark of the 2008/09 season already, and despite my pessimism about the law changes we have had a great season so far, having made it through to the fourth round of the EDF Senior Vase as well as leading the league table from the first match.

Our players and coaching staff appear to have got it right straight away as all our teams are performing well. Personally, I really enjoyed our local derby game against Newbold. We estimated upward of 600 spectators watched a closely contested match in glorious autumnal sunshine. OLs prevailed after a strong second half performance and we look forward to the return match on St Valentine's Day. I'm not expecting a massacre but I doubt there will be any love lost - put it in your diary.

We hope you have a memorable day today for all the right reasons and please feel free to use the clubhouse and bar as our bar manager Andie and her staff prefer to be kept busy.

Enjoy the game.

Reiner

Reiner Ferguson



*When only the best will do*



*Shirt Sponsors of  
Old Laurentian RFC*



10% saving on all  
purchases upon  
production of this  
programme



8 Sheep Street  
Rugby  
01788 569641



Member of  
Gemmological Association and Gem  
Testing Laboratory of Great Britain

## 2<sup>nd</sup> & 3<sup>rd</sup> XV - Fixtures & Results

			2nd XV			3rd XV		
				+	-		+	-
Sept	6	W	Old Coventrians	A	Post	Long Buckby (F)	H	7 12
Sept	13	W	Old Coventrians	A	48 34	Harbury II (L)	H	24 7
Sept	20	L	Kenilworth	H	10 64	Coventrians (L)	A	75 7
Sept	27	L	Nuneaton Old Eds	A	17 34	Kenilworth III (L)	H	20 0*
Oct	4	L	Spartans	H	70 17	Stoke Old Boys (L)	A	3 0
Oct	11	L	Newbold on Avon	A	0 16	Spartans III (L)	H	78 0
Oct	18	W	Stratford upon Avon	H	26 16	M Harboro' Vets (F)	H	Canc
Oct	25	L	Leamington	H	11 22	Bedworth Bears (L)	A	45 0
Nov	1	L	Old Coventrians	A	5 22	Manor Park (L)	H	36 24
Nov	8	L	Barkers Butts	A	15 24	Old Coventrians III (L)	A	57 12
Nov	15	L	Silhillians	H	46 12	Broadstreet III (L)	H	20 8
Nov	22	W	Kenilworth	A	27 39	Towcestrians (F)	A	25 12
Nov	29	L	Earlsdon	A		Leamington III (L)	H	
Dec	6	L	Stratford	H		Coventry Welsh (L)	A	
Dec	13	C	Southam	A		Shipston (F)	A	
Dec	20	L	Silhillians	A		Broadstreet III (L)	A	
Dec	26		<b>INTER CLUB GAME</b>					
Jan	3	F	Towcestrians	A		Towcestrians (F)	A	
Jan	10	L	Barkers Butts	H		Old Coventrians III (L)	H	
Jan	17	F	Harbury 1	A		Old Leamingtonians (F)	H	
Jan	24	L	Old Coventrians	H		Manor Park (L)	A	
Jan	31	L	Leamington	A		Bedworth Bears (L)	H	
Feb	7	F	Market Bosworth	H		M Harboro' Vets (F)	A	
Feb	14	L	Newbold on Avon	H		Spartans III (L)	A	
Feb	21	L	Spartans	A		Stoke Old Boys (L)	H	
Feb	28	L	Kenilworth	A		Shipston (F)	H	
March	7	L	Nuneaton Old Eds	H		Kenilworth III (L)	A	
March	14					Coventrians (L)	H	
March	21	F	Metropolis RFC, USA	H		Metropolis RFC, USA	H	
March	28	L	Broadstreet	H		Harbury II (L)	A	
April	4	L	Stratford	A		Coventry Welsh (L)	H	
April	11	F	Market Bosworth	A		Market Bosworth (F)	A	
April	18	L	Earlsdon	H		Leamington III (L)	A	
April	25					Long Buckby (F)	A	

Key: League (Warwicks 1 or 3) = L; Friendly =F; Warwickshire 2<sup>nd</sup> XV Cup = W, Clonmel Cup = C  
(\* Kenilworth failed to play the game so OLs take 4 league points and a 20-0 win)



In a competitive world, getting the right advice when you need it is often the difference between success and failure. Cottons are an accountancy & taxation practice offering a comprehensive range of services. Our aims are simple:

- To provide clients with the best business and financial services possible, giving positive and profitable solutions.
- To obtain a thorough understanding of your business and be proactive in seeking ways to make it successful.

## FREE Initial Consultation

Cottons is one of the leading independent Chartered Accountants with offices in Rugby, Southam, Banbury, Northampton and Daventry. Established since 1983, we offer an efficient and professional service led by the experienced partners.

No matter if you are an **Individual**, **Self-employed** or a **Limited Company**, an **Established Business** or just **Starting Out**

We deliver the following:

- A focus on you and your needs
- A proactive approach to your business problems
- Timely assistance which is friendly and helpful
- Value for money
- A clearly defined fee structure

Contact **Mark Palmer** to arrange your **free initial consultation**

**Rocheberie House**  
**26 Albert Street**  
**Rugby**  
**CV21 2RS**

**01788 542739**



## Today's Visitors

## Earlsdon RFC

**Earlsdon Rugby Football Club** has a long and proud history and is one of Coventry's best known clubs. Their ground and facilities at Mitchell Avenue are first class and have undergone continuous improvement over the years. The club has fostered many quality players over time, not least that phenomenal back row forward of Leicester, England and British Lions renown, Neil Back.

In recent years they haven't achieved the playing status that they are set up for, having found it tough (don't many clubs!) to move up from Midlands Three. But they are always difficult opponents, regularly capable of tripping up clubs of perceived higher status.

Since we moved down to Midlands Three, we have certainly found them difficult to overcome. Of the four games played over the last two seasons, before today, the score currently stands at two each. Most notable of our two losses was that in the last league game of the 2006/07 season, when defeat at Mitchell Avenue effectively killed off our chance of promotion.

The crowning point of their season last year was a narrow 15-8 defeat in the County Cup final to the mighty Broadstreet, after leading 8-3 at half time. Two late tries by Street finally killed off their lingering hopes of a glorious victory. This placed them in the demanding surroundings of the EDF National Trophy this season and they went out by 10-45 to very tough opponents in Caldy, who are the clear leaders of National League Three North.

They are enjoying a good league season this time round, having won five, drawn one and lost three games so far, and currently sit in fourth position, just three points behind us. They have scored well this season but, surprisingly for a side well placed in the table, have conceded more points than they have in the 'for' column.

So the scene is set for another intriguing tussle this afternoon, with the league points vital to the aspirations of both teams.

*EDF Senior Vase, Round 4 (Midlands)*

**Old Laurentians v Leicester Forest**

**Saturday 13<sup>th</sup> December, ko 2.00pm**



Bespoke Fire System Solutions

**LEADER**  
systems



Leader Systems core business is the design, supply, installation, testing and commissioning of automatic fire detection systems, backed up by comprehensive service and maintenance support.

Since our company began in the early 1980's we have supplied thousands of systems in hundreds of installations throughout the UK. The vast experience of our team means that we can find the solution for virtually any requirement given to us.

Unlike many, we are not tied to one equipment manufacturers range. As a systems house we can therefore custom design the best, most effective, most economical solution to your particular needs. The use of industry standard protocols and software ensures continued ease of maintenance and support.

Our customers are organisations both large and small. They include supermarkets, hotel groups, cinemas as well as large design and build contractors. Leader Systems has established a reputation for excellent service, quality and customer satisfaction.

We look forward to understanding your requirements and to proposing a bespoke fire system solution for you ....

3a Hadrian's Way,  
Glebe Farm Industrial Estate,  
Rugby, Warwickshire.  
CV21 1ST  
Tel: 01788 542220  
Fax: 01788 541087

[www.leadersystems.co.uk](http://www.leadersystems.co.uk)

email:  
[sales@leader-systems.co.uk](mailto:sales@leader-systems.co.uk)

## PERRY APPLETON GROUP

For all your personal and business financial needs  
**Insurances for;**

- Buildings, Home & Contents
- Private Vehicle
- Travel
- Commercial Premises
- Employers', Public and Product Liability
- Commercial Vehicles and Fleets
- Motor Trade

**Independent Financial Advice on;**

- Personal Pensions
- Company pension Schemes
- Income Protection
- Life Assurance
- Mortgages

The Elms  
3 Newbold Road  
Rugby  
Warwickshire  
CV21 2LQ

Phone: 01788 820500

Fax: 01788 541057

E.mail: [info@perryappletons.com](mailto:info@perryappletons.com)



*Try us First*

Perry Appleton Group Companies are all authorised and regulated by the Financial Services Authority.

Shop Online at  
**www.melbros.com**



Building & Timber Supplies ●  
Kitchen & Bathrooms Showroom ●  
Garden Landscaping ●  
Painting & Decorating ●  
Free Delivery\* ●  
Open 7 days a Week ●

**01788 866988**  
or visit [www.melbros.com](http://www.melbros.com)

Melbros House, Great Central Way, Rugby, CV21 3XH

\*Terms & Conditions Apply



## OLRFC Officers

President	Jon Bass
Chairman	Reiner Ferguson 01788 541395
Secretary	Alan Willis 01788 813481
Treasurer	Mike Pawsey 01788 576888
Playing Chairman	Colin Wiles 01788 811782
Fixture Secretary	Mick Roberts 01788 574247
Commercial Manager & Press Officer	Bill Wallis 01788 822687
Social Secretary	Tim Dougherty 01788 810558
Membership Treasurer	James Melvin 01788 521837
Web Manager	Ray Todd 01788 804220
VP Membership, 200 Club & Griffin Club	Pete Higgs 01788 575661
Club Shop	Leigh Fisher 01788 535472
Club Stewardess	Andie Middleton 07743 602930
O2 Pathfinder	Steve Pike 07961 915774

Fenley Field, Lime Tree Avenue, Bilton, Rugby, CV22 7QT  
01788 810855

### ***Next Home League Match***

**Midlands 3 West (South)**

**Saturday 20<sup>th</sup> December**

**v Silhillians**

**Kick off 2.15pm**



## EDF Energy Senior Vase 3rd Round – Midlands Results from 22 November

Barkers Butts	23 - 16	Old Saltleians
Bridgnorth	23 - 21	Kidderminster
Bugbrooke	20 - 41	Northampton Old Scouts
Ledbury	37 - 10	Silhillians
Leicester Forest	34 - 17	Dunlop
Lincoln	20 - 17	Aylestone St James
Loughborough	43 - 7	Northampton BBOB
Lutterworth	12 - 60	Spalding
Mellish	41 - 23	Bedworth
Newbold on Avon	64 - 10	Edwardians
Nuneaton Old Eds	37 - 8	Pershore
Old Laurentians	36 - 31	Lichfield
Old Northamptonians	62 - 0	Ashbourne
Towcestrians	16 - 3	Market Harborough
Wolverhampton	17 - 18	Veseyans
Worcester Wanderers	27 - 7	Leamington

Some predictable results in the Senior Vase 3<sup>rd</sup> round – and some surprising ones, too.

Top of the list in the latter category must come Leamington's comprehensive defeat at the hands of Worcester Wanderers. The Worcester side are in a division below, Midlands 4 West (S), and currently lying second in that league. Are Leam saving themselves for the league? Possible, but an unlikely strategy at our level!

Silhillians also went down to a Midlands 4 club, in what looks like a heavy defeat at the hands of Ledbury, who are no better than mid table in that league.

Newbold got the expected result against Edwardians, bottom of Midlands 4 West (S) and without a win to their name this season. It was the same story for Nuneaton Old Eds, overcoming Midlands 4 Pershore.

Given that the Senior Vase is open only to clubs at our level (7) and the level below, it does offer a golden opportunity for clubs to make their mark – and increasing prize money with each round negotiated.

*See the draw for the 4<sup>th</sup> round elsewhere in the programme.*

## Good Luck To The OL's

# Top class technology...

## ...in a class of its own



Hochiki are one of the World's leading Fire Detection Companies with a UK-based European headquarters which includes design, manufacturing and distribution.

### World class installations

include the new European Parliament building in Strasbourg.

### Advanced production techniques

allow Hochiki to maintain its international reputation for quality and reliability.

**International product approvals** to EN54, **manufacturing and design approval** to ISO9001.

**1st Choice for System Designers**

**HOCHIKI**  
World Class Leaders In Fire Detection  
since 1918

### HOCHIKI EUROPE (UK) LIMITED

Grosvenor Road · Gillingham Business Park · Gillingham · Kent ME8 0SA

Telephone: (01634) 260133 · Fax: (01634) 260132

e-mail: sales@hochikieurope.com · web site: www.hochikieurope.com

## Earlier Action – 15<sup>th</sup> November

### Midlands 3 West (South)

#### Silhillians 20 - Old Laurentians 23

Laurentians were pushed all the way by a lively Silhillians side who were in this game right to the end and came close to snatching victory in the dying seconds. But, on balance, OLs had earned the win that keeps them on top of the league.

It started well for OLs after Carl Adams picked up at a scrum and Richard Parker and Grant Inch combined well to put right wing Andy Coleman over in the corner with just three minutes gone. Danny Orr converted superbly from near touch and OLs appeared to be on their way.

But Sils had other ideas and their number 8 did well at the back of a retreating scrum to put his centre through for a try under the posts, the conversion levelling the scores. Sils then took the lead with a penalty after indecision in OLs' ranks as they tried to run out of defence, only for Orr to level with a penalty after 23 minutes to end a period of territorial dominance by the home side.

After two narrow misses, Orr added another penalty on the stroke of half time to give his side a 13-10 lead at the break.

Early in the second period, Sils levelled the score with a penalty, before OL's Matt Miller struck with an outstanding individual try. After skilfully fielding a Silhillians' kick deep in defence, the wing ran the ball back before putting in a long diagonal kick and outstripping the defence to win the race for the touch down. Orr missed the kick from wide out, leaving OLs 18-13 up.

Again the home side hit back with a try when OL's full back Inch spilled a pass close to his line and Sils gratefully accepted the gift to go over, the conversion taking them into a 20-18 lead with twenty minutes of the half gone.

But OLs were now imposing themselves on the game and after another good scrumage, Adams picked up and broke left before the ball was moved right where centre Ted Wallis sliced through the defence from thirty metres to touch down in the corner and give his side a winning lead. The same player made another long break but found himself without support and the chance went begging, before Sils came back strongly in the closing stages. Grant Inch more than redeemed his earlier mistake with a great tackle to save an almost certain try and preserve the league points for his side.

*Full reports of all club games can be seen on our website at [www.oldlaurentianrfc.co.uk](http://www.oldlaurentianrfc.co.uk).*

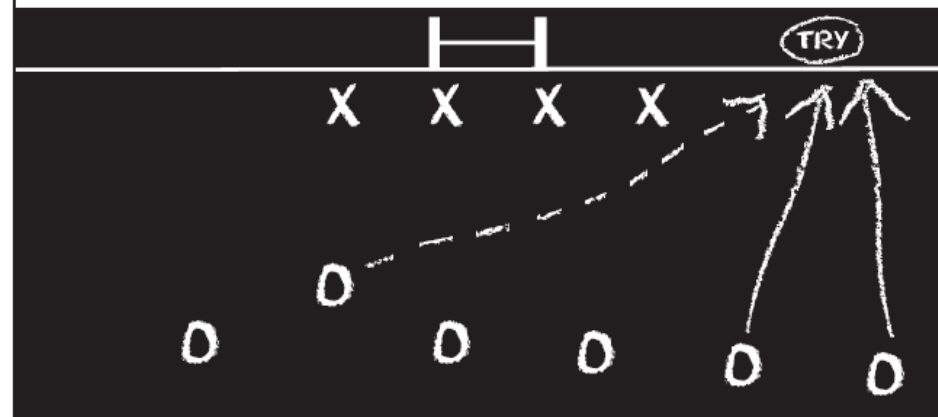


### Demolition – Site Clearance – Earthworks – Roads & Sewers

- 360° Wheeled & Tractor Elevators
- Montabert Hydraulic Breakers
- Tractor Shovels
- 180° Excavators
- Tipper & Low Loader Hire

Somers Road Industrial Estate Rugby  
01788 565186 / 578011 (phone) 01788 579878 (fax)

### Graphic Design that gets results!



**DIALHOUSE**  
VISUAL COMMUNICATION

T: (024) 7660 3030 F: (024) 7660 3666  
E: [sales@dialhouse.co.uk](mailto:sales@dialhouse.co.uk) W: [www.dialhouse.co.uk](http://www.dialhouse.co.uk)

## Match Report – 22<sup>nd</sup> November

EDF Energy Senior Vase, Round 3 (Midlands)

Old Laurentians 36 – Lichfield 31

In a game of wildly fluctuating fortunes, OLs won through to the next round of the Senior Vase. But a committed and skilful Lichfield side were entitled to feel a little aggrieved at going down after a strong fight back saw them recover from a 14-0 deficit in the first half to lead 24-14 early in the second.

OLs started strongly and after fourteen minutes Denzil Evans sent Iain Wallis over for OLs' first try, after a dummy run by Scott Wiles had drawn the defence. Then Grant Inch put in a penetrating run, carried on by Dan Volkman, before Steve Pike squeezed over from a quickly taken penalty, Evans converting both tries for 14-0.

On the half hour mark, OLs were attacking when a pass that would have put Matt Miller in the clear was intercepted by Lichfield's right wing who sprinted in to touch down, the conversion pulling the score back to 14-7. The visitors then struck again when they went over for a try after a spell of sustained pressure. The kick was missed but Lichfield were back in contention with a half time score of 14-12.

Lichfield made a lively start to the second half and their number 8 forced his way over, the converted try hoisting the visitors into the lead for the first time at 14-19. When their right wing went over for his second try after OLs had spilled a high kick ahead, the lead was extended to 14-24 and OLs had a fight on their hands.

Then Evans dodged his way over after more good lineout possession, converting his own try, and OLs were back in the game at 21-24. The same player then sent Grant Inch in for a try to put OLs ahead at 26-24 with twenty minutes of the half gone.

Lichfield struck back after another OL's attack broke down and went through to score a converted try and take the lead again at 26-31. But the home side were now dominating territory and possession, largely through some excellent lineout play by Steve Pike and Jeff Thomas, assisted by Mark Todd's pinpoint throwing. Prop Leif Berg was prominent with some strong carries and Denzil Evans was kicking OLs into good positions with his customary accuracy.

The game was clinched for OLs with the afternoon's best try, again involving Evans. The stand off took quick possession in Lichfield's 22 and hoisted a perfect diagonal kick to the corner, where right wing Jamie Brightwell fielded it brilliantly on the full to go over, Evans' conversion from the touchline restoring OL's lead at 33-31.

OLs finished the game on the offensive and registered the final score when centre Iain Wallis, revealing his normally well hidden kicking skills, put over a drop goal that left the visitors needing a try to level the scores. But the home side were in no mood to surrender their advantage and ran out narrow winners of a game that had kept both teams' supporters on the edge from first to last.



Euro Cable Installations Ltd  
24 Kilsby Road  
Barby  
Rugby  
CV23 8TT

Tel: (01788) 551706

### ***Installers and Suppliers of Computer and Telephone Networks and Equipment***

Contractors for

Data Network Structured Wiring  
Category 5 & Fibre Optic  
Computer Systems  
Telephone Systems  
Fire Systems

*Installations to a standard,  
not to a price.*



# Excel

## Heating and Plumbing

### 01788 560838

*Best wishes to Old Laurentians For  
the season*

## Action from the 2<sup>nd</sup> & 3<sup>rd</sup> XVs – 22<sup>nd</sup> November

### Warwickshire 2<sup>nd</sup> XV Cup – Quarter Final

#### Kenilworth 2nds 39 – Old Laurentian 2nds 27

OLs fought back from a half time deficit of 28-12 to make a real match of this in the second half against higher ranked opponents. It took OLs forty minutes to wake up to the challenge, but by then they had gifted three simple tries to the opposition and a game that they could have won was just out of reach.

In the second period, OLs dominated territory and possession, Danny Orr pushing Kenilworth back relentlessly with a fine kicking display, capitalising on the excellent possession from a pack in which Lawrence Sherriffs was producing a stream of quality lineout ball.

Richard Parker had an outstanding game at scrum half, topping his performance with an individual try of high calibre. He and half back partner Orr had a point to make to OL's selectors, which they did emphatically. Orr grabbed a try when the whole Kenilworth team expected him to take a penalty shot at goal, but he caught them napping with a quick tap to himself to go over for the touchdown.

Full back Howard Harris finished off a fine team try, sent over by Chris Reed who was having an excellent game in the centre. Garrie Reeve completed the try scoring when he bullocked over from close range; and Orr added two conversions and a penalty, to move past 100 points for the season.

OLs were left looking back ruefully at a game that they were good enough to win and another exit from the Warwickshire 2nds Cup at the hands of these old rivals.

### Friendly

#### Old Laurentian 3rds 25 – Towcestrian 3rds 12

OL's 3<sup>rd</sup> team had a rest from league action this week and several key players, including skipper Birch, took the opportunity to rest their weary old bones. This gave OLs the chance to give a game to several younger players who performed well amongst their elders.

Unfortunately, Towcestrians could not provide a full front row and the game was played with passive scrummages. This was to prove detrimental to the flow of the game with OL's pack built more for strength than mobility. However, everyone stuck to the task and in the end ground out a good result against the dogged visitors.

OL's tries came from guest Ben Nuttall, who had an excellent game in the unfamiliar berth of flanker, the ever present Gary Hammond, also playing out of position in the back row, and stand in skipper Kev White, who also added two conversions.

There was a sweetly struck drop goal (normally unheard of in a 3rds game) by influential fly half Mark Palmer and White rounded the scoring off with a penalty.

OL's ultimately did enough to deserve the win but will have to up the intensity for Saturday's league encounter against a strong and unbeaten Leamington outfit.

*Thanks to Dave Middleton and Kev White for these reports.*



Wish OL's the best of luck this season!

Cranford Controls has grown to become a first class reliable and leading British independent manufacturer of fire safety and security products.

Cranford's products are sold world-wide through a highly experienced distribution network.



### Cranford Controls Ltd

Unit 2 Waterbrook Estate, Waterbrook Road,  
Alton, Hampshire, GU34 2UD, UK

Tel +44 (0)1420 592444 Fax +44 (0)1420 592445

Web [www.cranfordcontrols.com](http://www.cranfordcontrols.com) E-mail [sales@cranfordcontrols.com](mailto:sales@cranfordcontrols.com)

advanced thinking...

intelligent control equipment for life safety

The Mx-4000 series fire control panels were the first panels to receive EN54 approval from the British Standards Institute (BSI) and proudly bear the internationally recognised quality Kite Mark. The full range, from one to eight loops, have been approved to EN-54, parts two and four for use with Apollo XP95, Discovery and Hochiki ESP devices.

Advanced Electronics Ltd  
T: +44 (0) 1670 707 111  
F: +44 (0) 1670 707 222  
E: [sales@advel.co.uk](mailto:sales@advel.co.uk)

[www.advel.co.uk](http://www.advel.co.uk)

■ advanced technology ■ advanced service ■ advanced people

## Sundry Stuff

### Cup Draws

The draw for the 4<sup>th</sup> Round of the EDF Energy Senior Vase is shown in full below.

In the Warwickshire Cup, the 1<sup>st</sup> XV are drawn against Old Coventrians and the tie will be played at their ground on Saturday 3<sup>rd</sup> January, kick off 2.00pm

The 2nds play their first game in this season's Clonmel Cup against Southam (away) on Saturday 13<sup>th</sup> December, ko 2.00pm, making it another cup double header on that day.

### Leading Scorers

With his twelve points for the 2nds against Kenilworth last week, **Danny Orr** passed the 100 point barrier for the season, and now has 111 to his name – possibly the youngest player in the club's history to achieve that milestone (unless anybody knows better!).

But he is in a real battle to become the club's leading points scorer for the season with **Kev White**, who is currently leading the way with 125 points. And don't count Kev out of the race to make it a double, as he already has seven tries to his credit in that total, just two behind the leading try scorer, **Matt Miller**, who is on nine.

Nor should we write off that perennial accumulator **Denzil Evans**, who, despite an injury delayed start to the season, has already recorded 67 points.

### EDF Senior Vase – Draw for 4<sup>th</sup> Round (Midlands)

Loughborough	v	Newbold on Avon
Mellish	v	Worcester Wanderers
Northampton Old Scouts	v	Ledbury
Old Laurentians	v	Leicester Forest
Old Northamptonians	v	Bridgnorth
Spalding	v	Nuneaton Old Eds
Veseyans	v	Barkers Butts
Loughborough	v	Newbold on Avon

*Matches to b played on Saturday 13<sup>th</sup> December*

Our opponents, Leicester Forest, play in Midlands 3 East (South) and currently lie in 8<sup>th</sup> place in that league with a won 3, lost 6 playing record. They beat Market Rasen in round two and Dunlop in the third round – both of those clubs play in Midlands 4 and are leading their respective divisions.

## Warwickshire League 1

Pos	Team	P	W	D	L	PF	PA	PD	Pts
1	Broadstreet	8	8	0	0	322	60	262	32
2	Leamington	9	6	0	3	179	117	62	27
3	Kenilworth	7	6	0	1	232	96	136	25
4	Nuneaton Old Eds.	7	6	0	1	196	103	93	25
5	Newbold-on-Avon	9	5	0	4	127	140	-17	24
6	Barkers Butts	8	4	0	4	135	206	-71	20
7	Spartans	9	3	0	6	137	225	-88	18
8	Old Coventrians	8	3	0	5	99	147	-48	17
9	Stratford	9	3	0	6	146	261	-115	16
10	Old Laurentians	8	2	0	6	171	211	-40	14
11	Earlson	9	2	0	7	121	184	-63	14
12	Silhillians	9	2	0	7	156	271	-115	14

## Warwickshire League 3

Pos	Team	P	W	D	L	PF	PA	PD	Pts
1	Old Laurentians III	9	9	0	0	358	63	295	36
2	Leamington III	9	8	1	0	331	73	258	34
3	Broadstreet III	9	8	0	1	435	70	365	33
4	Manor Park II	9	5	1	3	296	110	186	25
5	Harbury II	9	5	0	4	158	158	0	24
6	Kenilworth III	9	5	0	4	193	179	14	23
7	Spartans III	9	3	0	6	115	248	-133	18
8	Coventry Welsh II	9	3	0	6	117	268	-151	18
9	Old Coventrians III	9	2	0	7	94	547	-434	15
10	Stoke Old Boys II	9	2	0	7	90	169	-79	14
11	Bedworth III	9	2	0	7	101	222	-121	12
12	Coventrians II	9	1	0	8	114	295	-181	11

Warwickshire Leagues score four points for a win, two points for a draw and one point to losing teams for playing. In the event of a team failing to fulfil a fixture, a 20-0 win is awarded to their opponents.

## Photo Action from Senior Vase v Lichfield, 22 November



Iain Wallis on his way for OL's first try



Jamie Brightwell tries to muscle out of a tackle



Steve Pike leaps high in a lineout



Grant Inch goes over for a try



Denzil Evans sets his threes going



Reedo feeds Dan Volkman

Photos by Ray Todd

You can see all of the OLs photos by visiting [www.raytodd.jalbum.net](http://www.raytodd.jalbum.net)



# CPM

11-13 The Green, Bilton, Rugby, CV22 7LZ  
Telephone 01788 814334 Fax 01788 52172

PROPERTY RENTAL AND MANAGEMENT  
Contact: Tom Costello

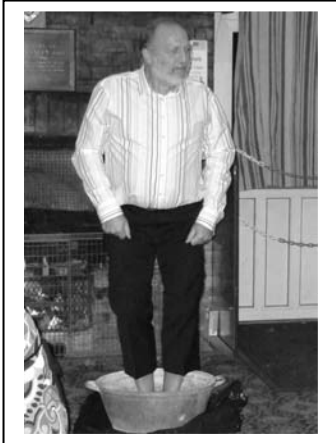
*The Best Rugby Club Drink In the  
Best Rugby Pub*

***The Merchants Inn***

[www.merchantsinn.co.uk](http://www.merchantsinn.co.uk)

***Serving the needs of the OLs  
since 2002***

## Wine & Music Evening



Some 60 people were at a very successful Wine & Music Evening at the club on Friday 21<sup>st</sup> November. That number included your correspondent, so if this account doesn't tally exactly with any others you may have heard, the fulsome quantities of wine consumed will explain any discrepancies.

Expertly presented by Clive Pawsey and with music from Cat's Whiskers that complemented the ambience (and the average age of guests!), the main event of the evening was a wine tasting quiz in which eight or nine teams took part. The winners were Birchy's Bruisers, who bludgeoned their way to victory, winning a tie break with Linnell's Louches (or something).

The winners claimed to be sophisticated *bon viveurs* who knew their grenache from their pinot gris, but no-one believed that – they just happened to tick the right boxes on the answer sheets!

Our picture shows John Tull treading grapes in a tin bath – whether the output of his labour was then decanted into bottles for the next wine to be tasted, no-one was saying!

## Diet & Wellness Coach

### Sport Nutrition

*As an athlete and regular sports competitor,  
your goal is to win!*

### Herbalife can help!

*Whilst pursuing excellence, the physical demands on  
your body are immense. It is vital that you nurture your  
body with the very best nutritional products available in  
the world – Herbalife.*

*Call your personal Sport Nutrition Coach now!*


**Kay Cobley**  
**01788 811827**  
**Independent Herbalife Distributor**  
**[www.food-4sport.co.uk](http://www.food-4sport.co.uk)**



Brethertons are proud to support Old Laurentian RFC

We have provided legal services to individuals and businesses in Rugby for nearly 200 years. Please give us a call on (01788) 579579 to find out more.

**[brethertons.co.uk](http://brethertons.co.uk)**



Wish  
The Old Laurentian  
Rugby Club  
every success!



## Leading Scorers (15 pts or more, to 22/11/08)

Player	Tries	Convs	Pens	Drops	Tot Pts
Kev White	7	39	4	0	125
Danny Orr	1	26	18	0	111
Denzil Evans	3	20	3	1	67
Matt Miller	9	0	0	0	45
Simon Bayliss	7	0	0	0	35
Rich Parker	7	0	0	0	35
Jamie Brightwell	7	0	0	0	35
James Murray	5	2	1	0	32
Rhys Wade	6	0	0	0	30
Stuart Birch	6	0	0	0	30
Ben Wiles	2	8	1	0	29
Mawande Sinyakanyaka	5	0	0	0	25
Iain Wallis	4	0	0	1	23
David Longrigg	4	0	0	0	20
Ricky Reed	4	0	0	0	20
Gary Hammond	4	0	0	0	20
Matt Cockman	3	0	0	0	15
Pete Rigg	3	0	0	0	15
Marc Owen	3	0	0	0	15
Rich Hughes	3	0	0	0	15

## Trafalgar Electronics

for all your audio visual needs

*Sales, supply, installation and repairs of*  
**DVD & Video, Television, Satellite**  
**Plasma & LCD, Big Screen TV**

**Hire of projectors & PA**

**Phone/fax: 01788 542888**

**[www.trafalgarelectronics.co.uk](http://www.trafalgarelectronics.co.uk)**

## Sponsorship & Advertising Opportunities

As a club, we rely ever more heavily on the valued support of sponsors and advertisers. This season, several new names appear on pitch-side banners, in the programme and as match and ball sponsors. We welcome them, along with our regular sponsors, and thank them for their generosity and support.

This season we have a full list of 1<sup>st</sup> team jersey sponsors for the whole season. Many thanks for the generous contributions of those sponsors, whose names you will see on today's team pages.

However, many opportunities still remain, particularly as match sponsors and ball sponsors; and there are still spaces for programme advertisers.

**If you would like to take advantage of these, and other opportunities, or know of any individuals or organisations who could be approached, then please contact Bill Wallis, either at today's match, by 'phone on 01788 822687, or email to [bill@wallis21.wanadoo.co.uk](mailto:bill@wallis21.wanadoo.co.uk)**

## Brindley lift truck services ltd

*Hire ~ Sales ~ Service*



*wishing good luck to Old Laurentian RFC*

Aston Lane, Sharnford, Hinckley, 01455 272800

[www.lift-truck.co.uk](http://www.lift-truck.co.uk)

P

# Good Luck OL's

Prontaprint Rugby  
18a Church Street, Rugby  
Warwickshire CV21 3PU  
Tel: 01788 565650  
Fax: 01788 570772  
Email: sales@rugby.prontaprint.com  
Web: www.rugby.prontaprint.com

Give your  
Business the  
**STAR**  
treatment!

Design	Print	Display	Direct Mail	Finish
--------	-------	---------	-------------	--------

**prontaprint**...trusted to deliver, every time.



[www.hydrex.co.uk](http://www.hydrex.co.uk)

Specialists in the short-term rental, contract rental and sale of mobile plant and equipment within the construction, industrial and extraction industries.

**John Tull  
Wishes  
Good Luck to  
*Old Laurentian RFC***

## Farewell Leif



Today we had hoped to see Leif Berg in action for OLs, as it would have been the last time before he returns to the USA. But injury has, unfortunately, ruled him out of contention for selection.

Leif made an immediate impression when he first appeared for the club and was soon in the first XV at prop forward. Standing 6'2" and weighing in at 16 stone, he added strength and formidable scrummaging power to our pack. He is also pretty useful about the pitch, our picture showing a familiar sight.

Thanks for your contribution this season, Leif and please stay in touch. You'll always be welcome if you should pass this way again.

## Notable Dates & Events

Check out [www.oldlaurentianrfc](http://www.oldlaurentianrfc) for updates and new events

Date	What's happening
Dec 13 <sup>th</sup>	EDF Energy Senior Vase 4 <sup>th</sup> Round tie v Leicester Forest, ko 2.00pm
Dec. 24 <sup>th</sup>	Children's Christmas Party
Dec. 26 <sup>th</sup>	Inter-club game, followed by a Christmas Karaoke
Jan. 1 <sup>st</sup>	New Year's Day Party, including champagne breakfast
Jan 3 <sup>rd</sup>	Warwickshire Cup, v Old Coventrians (away)
Jan. 24 <sup>th</sup>	VP's Away Day, at game v Old Coventrians
March 14 <sup>th</sup>	Captain's Day, at game v Kidderminster
March 21 <sup>st</sup>	Games against touring party from Metropolis RFC, Minneapolis
March 21 <sup>st</sup>	Party Night, with live band 'Twisted Vision'
April 4 <sup>th</sup>	Sponsors Day, game v Berkswell & Balsall
May 8 <sup>th</sup>	Club Dinner [Note date change from 1 <sup>st</sup> May]

## Midlands 3 West (South) League Table

Pos	Team	P	W	D	L	PF	PA	PD	Pts.
1	<b>Old Laurentians</b>	9	7	0	2	230	140	90	14
2	Leamington	9	6	0	3	204	136	68	12
3	Nuneaton O. E.	9	6	0	3	170	152	18	12
4	Earlsdon	9	5	1	3	159	171	-12	11
5	Barkers Butts	8	5	0	3	141	96	45	10
6	Old Coventrians	9	5	0	4	151	166	-15	10
7	Droitwich	9	4	1	4	131	131	0	9
8	Newbold on Avon	8	4	0	4	129	136	-7	8
9	Spartans	9	4	0	5	133	190	-57	8
10	Kidderminster	9	2	1	6	138	189	-51	5
11	Silhillians	9	2	0	7	178	208	-30	4
12	Berkswell & Balsall	9	1	1	7	99	151	-52	3

## League fixtures and results

	Bark	B&B	Droit	Earl	Kidd	Leam	Newb	NOEs	OCs	OLs	Sils	Spart
Barkers Butts		<b>27-7</b>	<b>8-16</b>	<b>35-16</b>	<b>17-8</b>	21/02	14/03	<b>11-20</b>	31/01	10/01	18/04	06/12
B & Balsall	07/03		21/02	<b>12-17</b>	<b>7-16</b>	<b>10-11</b>	10/01	31/01	18/04	06/12	28/03	<b>22-3</b>
Droitwich	14/02	<b>10-10</b>		07/03	31/01	18/04	<b>23-3</b>	<b>7-15</b>	06/12	28/03	<b>28-17</b>	10/01
Earlsdon	28/03	14/03	<b>15-3</b>		21/02	10/01	<b>17-19</b>	<b>26-20</b>	<b>18-12</b>	18/04	06/12	31/01
Kidderminster	24/01	14/02	<b>15-25</b>	<b>18-18</b>		06/12	18/04	10/01	28/03	<b>14-31</b>	07/03	<b>31-21</b>
Leamington	<b>0-13</b>	20/12	29/11	<b>20-22</b>	04/04		<b>25-15</b>	<b>5-19</b>	14/02	<b>41-15</b>	24/01	14/03
Newbold	Postp	<b>27-19</b>	20/12	24/01	29/11	07/03		04/04	<b>17-10</b>	14/02	<b>32-17</b>	<b>3-7</b>
Nuneaton OEs	20/12	<b>17-0</b>	24/01	14/02	<b>19-12</b>	28/03	06/12		<b>23-24</b>	07/03	<b>23-18</b>	18/04
Old Covents	<b>14-13</b>	29/11	04/04	20/12	<b>24-19</b>	<b>10-35</b>	21/02	14/03		24/01	<b>30-18</b>	<b>27-3</b>
OLs	<b>15-17</b>	04/04	<b>32-12</b>	29/11	14/03	31/01	<b>18-13</b>	<b>49-17</b>	<b>20-0</b>		20/12	21/02
Silhillians	29/11	<b>23-12</b>	14/03	04/04	<b>27-5</b>	<b>14-28</b>	31/01	21/02	10/01	<b>20-23</b>		<b>24-27</b>
Spartans	04/04	24/01	<b>16-7</b>	<b>32-10</b>	20/12	<b>18-39</b>	28/03	29/11	07/03	<b>6-27</b>	14/02	

The above matrix shows Midlands 3 West (South) League fixtures and results. Numbers separated with a dash (8-3), and in bold, are results; numbers separated with a slash (14/02) indicate date of fixture. Home side is in the left hand column, away side along the top, home side score is always to the left. All OL's fixtures are shaded.

## The Experimental Law Variations - a brief guide

Much has been written about the ELVs, which came into force from August 2008 for an experimental period of 12 months. The IRB will then review all the ELVs before deciding if all or any of them should be accepted into the full laws of the game. You can download the full document from the home page of our website – but here is a brief guide to the main changes.

### The Maul

Players may now defend a maul by pulling it down. To do this, the defender must grasp an opposing player in the maul anywhere between shoulders & hips and then pull that player down.

### Touch & Lineout

(1) Teams will no longer be able to pass or play the ball back into their own 22 and then kick directly into touch to gain ground. In such cases (when no opposition player has touched the ball) the lineout is taken at a point opposite where the kick was taken.

(2) A quick throw in may be thrown in straight or towards the throwing team's own goal line.

(3) There is no restriction on the number of players from either team who can participate in the lineout, as long as each team has a minimum of 2 players in the lineout and all lineout players fit between the 5-metre line and 15-metre line. (4) The receiver of a ball from a lineout must be 2 metres away from the lineout; and the player who is in opposition to the player throwing the ball must stand between the 5-metre line and the touch line but must be 2 metres away from the 5-metre line.

### The Scrum

The introduction of an offside line 5 metres behind the hindmost feet of the scrum. This means that at a scrum, the backline (all non participants in the scrum) must be 5 metres back from the hindmost feet of the scrum.

**Corner Posts** – The corner posts are no longer considered to be in touch-in-goal except when the ball is grounded against the post. This means that a try will no longer be disallowed if the ball carrier touches the corner post before grounding the ball as long as that player has not otherwise been in touch. But a try will still be disallowed if the ball is grounded against the corner post. If a ball hits the corner post and bounces back into the playing area, the game continues.

**What should the ELVs achieve?** Although Northern hemisphere countries believe that the ELVs are a Southern hemisphere plot designed to neutralise their physical, forward based game, they should allow the ball to stay in play for a greater time; and they may encourage players and coaches to consider what they can do with the ball apart from crashing into the nearest defender. Will they work? The jury will be out for a while!

Saturday 29 <sup>th</sup> November, 2008			Tries	Kicking	Cards	Cards	Kicking	Tries	Midlands 3 West (South)		
<i>Old Laurentian RFC</i>									<i>Earlsdon RFC</i>		
Sponsored by		Player							Player		The Official
<i>Cleaver Scientific Ltd</i>	15	Grant Inch							15	<p><i>Today's referee is <b>Chris Higgins</b> of the Manchester Society, to whom we extend a warm welcome, along with our thanks for officiating over today's game.</i></p> <p><i>As always we expect you to treat him, and his decisions, as you would expect to be treated yourself.</i></p>	
<i>Excel Heating</i>	14	Andy Coleman							14		
<i>Jim Darcy</i>	13	Ted Wallis							13		
<i>Simon Bracken</i>	12	Iain Wallis							12		
<i>Spike Pawsey</i>	11	Matt Miller						Regretfully the	11		
<i>Cottons Accountants</i>	10	Denzil Evans						Earlsdon team	10		
<i>F &amp; F Fencing (Phil Reed Snr)</i>	9	Ricky Reed						could not be	9		
<i>The Merchant's Inn</i>	1	Ollie Cowley						provided	1		
<i>Martin Valentine</i>	2	Mark Todd						in time for	2		
<i>Dave Eales</i>	3	Chris Le Poidevin						our print deadline	3		
<i>Tom Costello</i>	4	Dan Volkman							4		
<i>Arwel Jones</i>	5	Jeff Thomas							5		
<i>Stuart Gleghorn</i>	6	Steve Pike							6		
<i>Electrical Testers</i>	7	Gary Smith							7		
<i>Ray Roberts</i>	8	Glenn Todd							8		
	16	Russ Kennedy							16		
	17	Tom Gleghorn							17		
	18	Chris Reed							18		